

# Art Applewhite Rockets

from deep in the heart of Texas



## 18 mm Pinwheel

Recommended motors:

A8-3, B6-0, B6-2, B6-4, C6-0, C6-3, C6-5

Parts:

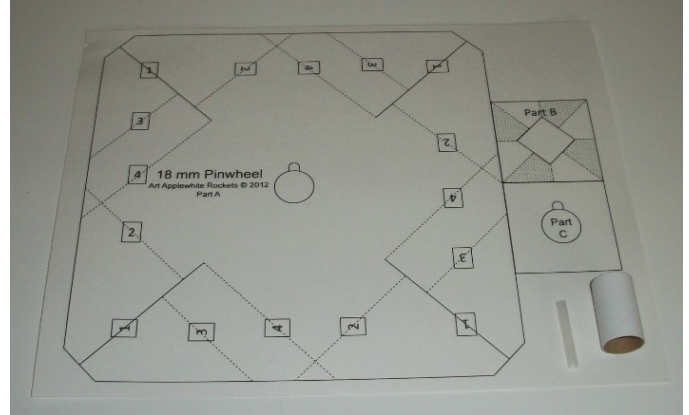
Body – Cardstock

BT-20 Motor Mount – 1.25" long

1/8" Launch Lug – 1.25" long

Additional Materials and Tools:

Elmer's Glue-All, #11 X-Acto® knife



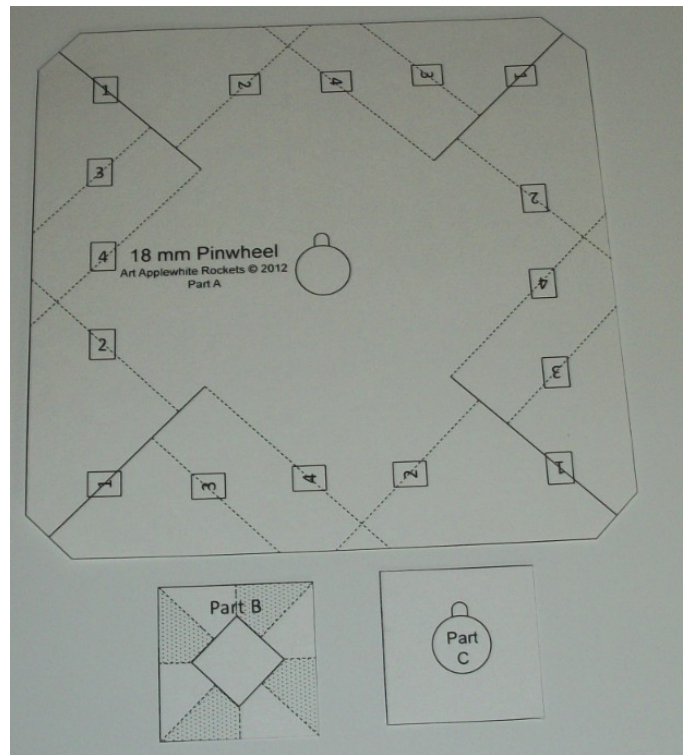
Construction Tips:

- Read **all** the instructions before starting construction.
- Test fit all parts before gluing them.
- **Elmer's Glue-All** is the only recommended glue for this kit.
- Allow the glue to dry before going to the next step.
- If you have any questions please contact Art Applewhite at [rocket877@aol.com](mailto:rocket877@aol.com)

1. Glue the Launch Lug to the Motor Mount. Make sure the Launch Lug is straight on the Motor Mount and no glue gets inside the Launch Lug.

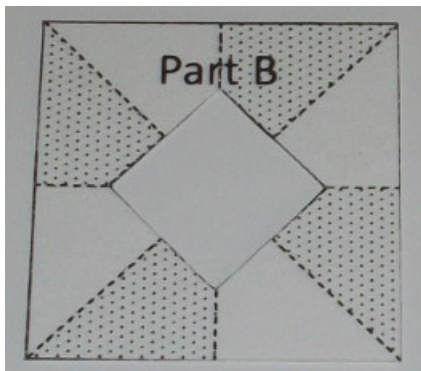
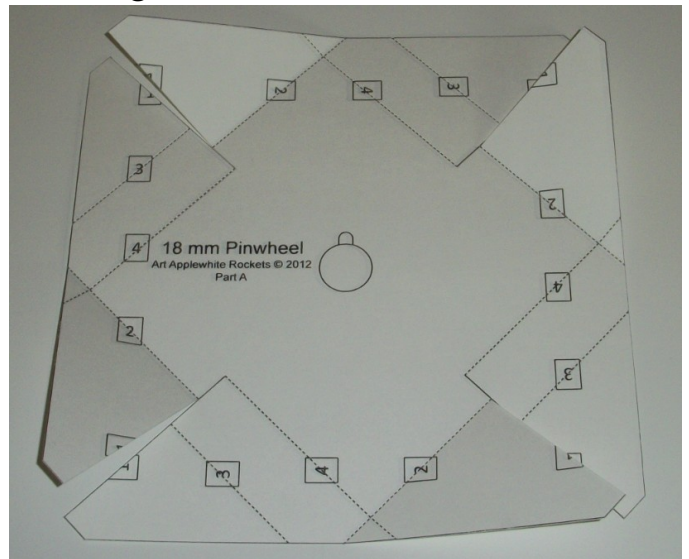


2. Cut out the 3 parts, A, B & C, directly on the **solid** lines.

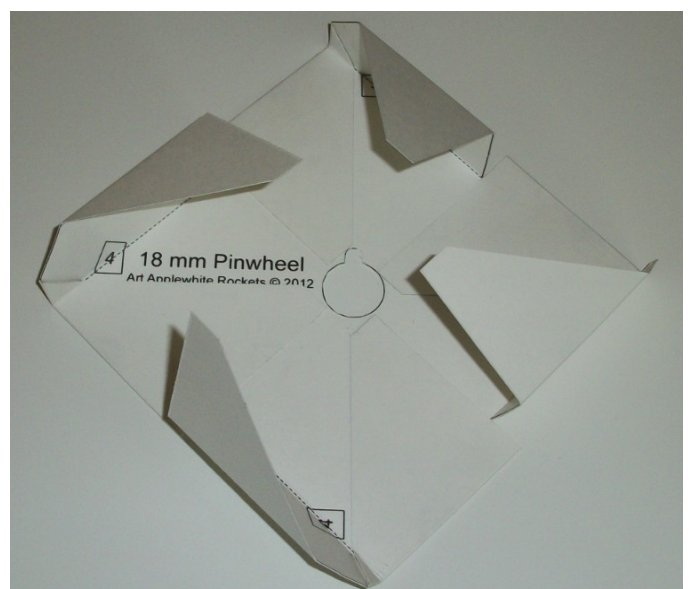
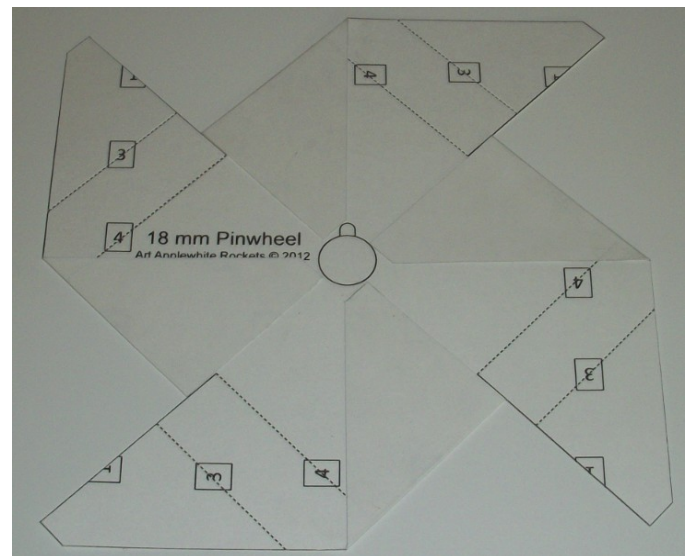


## 18 mm Pinwheel - Page 2

- To make folding the cardstock easier and straighter, score all the dash lines, marked 2, 3 & 4 on part A with a straight edge and a dried out ball point pen or other stylus-type instrument.
- Cut directly on the 4 solid lines marked 1 on part A.
- Fold over on the dashed lines marked 2 (toward the printed side) and glue with white (Elmer's) glue. Make sure the flaps stay completely flat and the glue dries.
- Cut out the Motor Mount and Launch Lug holes on Part A.
- Fold over all the dashed lines marked 3 & 4 but do not glue.

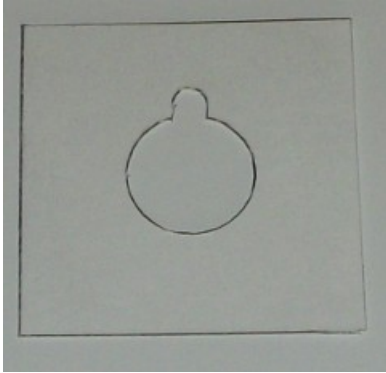


- Cut out the square, middle hole on part B.

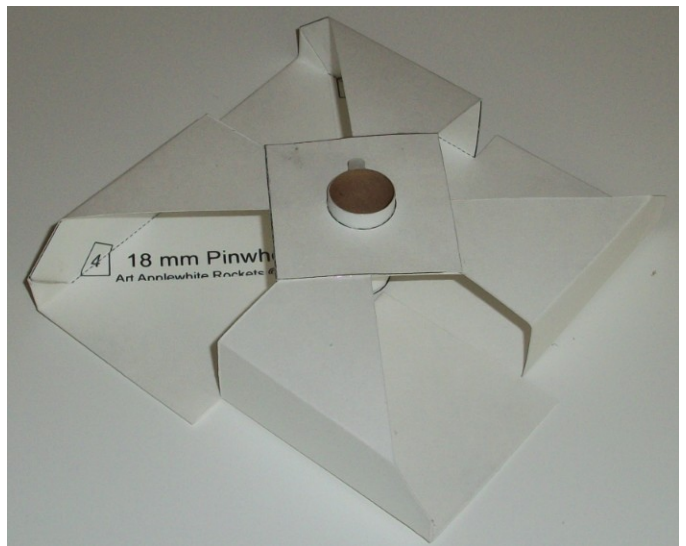
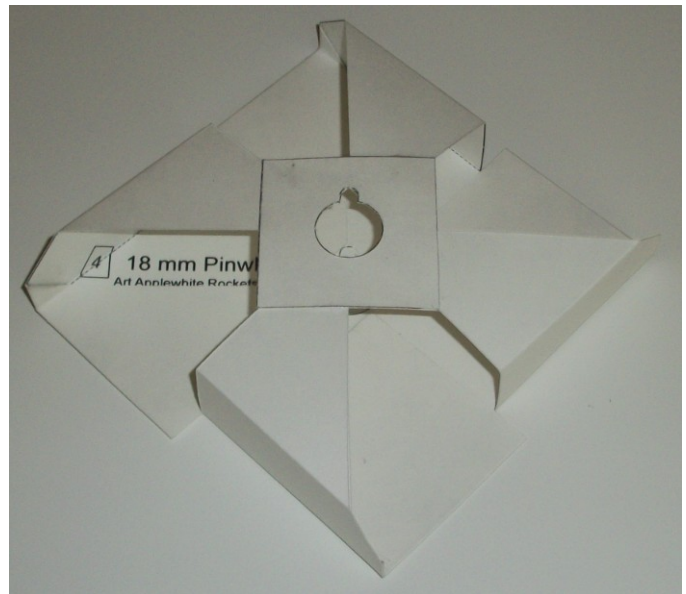
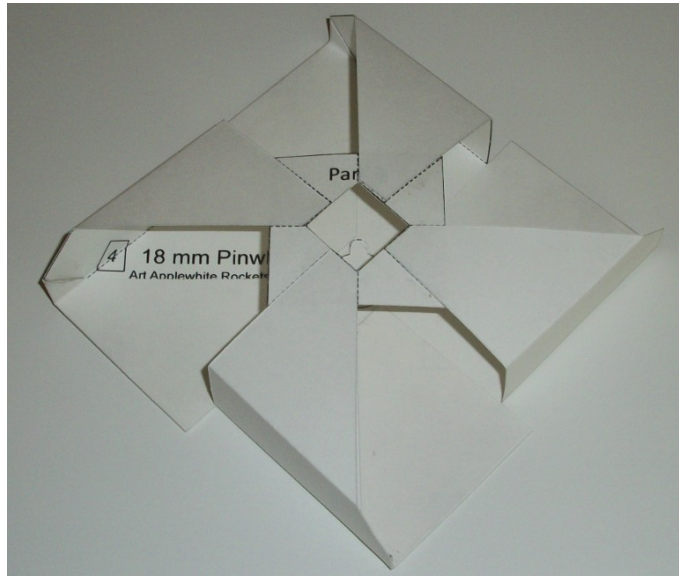


## 18 mm Pinwheel - Page 3

9. Glue the 4 tips of the folded over part of A to part B. The tips should exactly cover the shaded areas on part B. Make sure folds 3 and 4 are 90 degrees and the cardstock is reasonably flat.



10. Cut out the Motor Mount and Launch Lug holes on part C.
11. Glue part C over the top of part B and the tips of part A. Make sure to line up the Launch Lug holes between parts A & C. Also make sure all the cardstock parts are flat and in good contact with each other.
12. Insert the Motor Mount with Launch Lug attached into the Motor Mount holes of parts A & C. The Motor Mount should stick out 1/8 inch above and below the TOP (Part C) and BOTTOM (Part A) respectively. The Launch Lug should line up with the Launch Lug holes..
13. Glue the Motor Mount to the TOP and BOTTOM. After the glue dries, fillet the joints with additional white glue to make them strong.
14. Moisture or high humidity may cause the cardstock to "wilt" so it should be protected with a spray-on waterproof coating such as clear enamel.



## 18 mm Pinwheel - Page 4

Recommended motors: A8-3, B6-0, B6-2, B6-4, C6-0, C6-3, C6-5

### Flight preparation:

- Tightly wrap three layers of masking tape around the nozzle end of the motor to form a thrust ring.
- Insert the motor into the Motor Mount all the way to the thrust ring. Make a second thrust ring at the top of the motor so that it stays fixed in the motor mount.
- Launch from a 1/8" rod that is at least 18 inches long.
- Support the rocket far enough above the blast deflector to prevent burning of the rocket by the hot motor exhaust.



Limitation of Liability: Model rockets are not toys. Model rockets are functional rockets constructed of lightweight materials and launched using pre-manufactured, certified model rocket motors in accordance with the NAR Model Rocket Safety Code. Model rockets, if misused, can cause injury, property damage and even death. Art Applewhite Rockets certifies that it has exercised reasonable care in the design and manufacture of its products. Once sold, we cannot assume any liability for product storage, transportation or usage. Art Applewhite Rockets shall not be held responsible for any property damage or personal injury whatsoever arising from the handling, storage, use or misuse of our product. The buyer assumes all risks and liabilities there from and accepts and uses Art Applewhite Rockets products on these conditions.